

# DE VERBINDENDE KRACHT VAN KAA GENT

## Entrance G



Parking for busses and individual cars. Disabled supporters: pls. notice at advance.



**KAA GENT FOUNDATION**  
*vzw Voetbal in de stad*

Ottergemsesteenweg Zuid 808  
9000 Gent  
Tel: 09 330 23 34  
Fax: 09 330 23 80

E-mail:  
[contact@kaagentfoundation.be](mailto:contact@kaagentfoundation.be)

BTW nr./Ondernemingsnr.:  
BE 0823.319.370

Rekeningnummer:  
IBAN BE76 8902 3413 5395  
BIC VDSPBE91

[www.kaagentfoundation.be](http://www.kaagentfoundation.be)  
[www.facebook.com/kaagentfdn](https://www.facebook.com/kaagentfdn)  
[www.twitter.com/kaagentfdn](https://www.twitter.com/kaagentfdn)

Lowered ticket counter at away-section.



Elevator to level +2



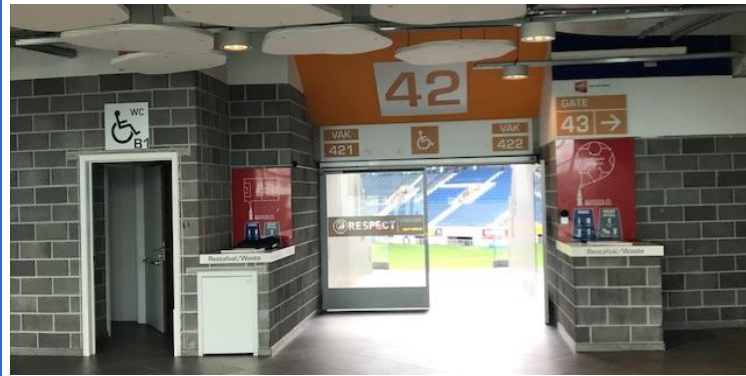
Adopted toilet level +2



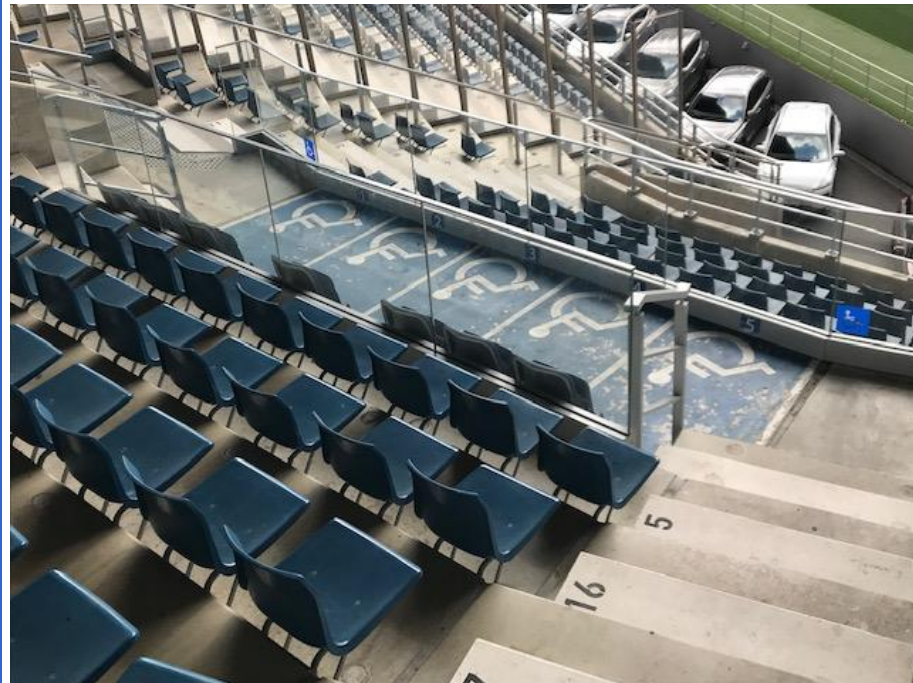
Lowered drink and food stand at level +2



Entrance to the stands



Away wheelchair places (10)



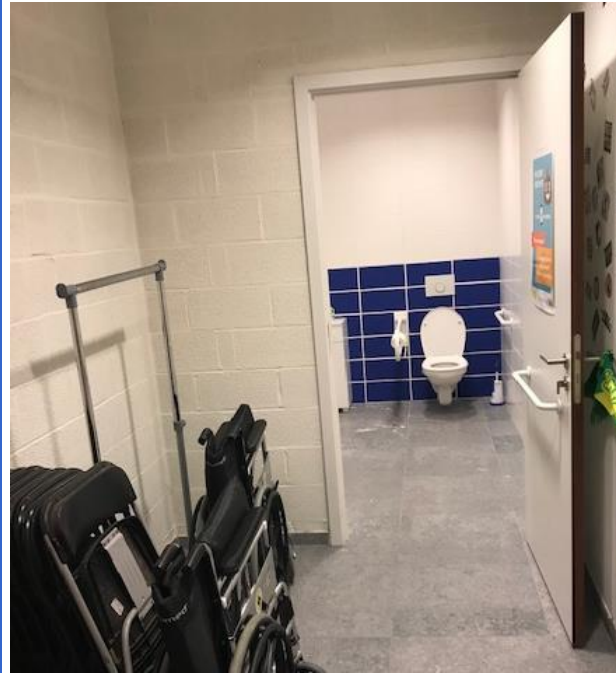
Companion seats behind the disabled supporters.



## Sightlines



Extra accessible toilet at First Aid post away section.



Wim Beelaert  
DAO  
2019-20